



MONTHLY MEMBERSHIP PROGRESS REPORT

District 12 S

Results as of: 6/30/2017

GMT: OPEN

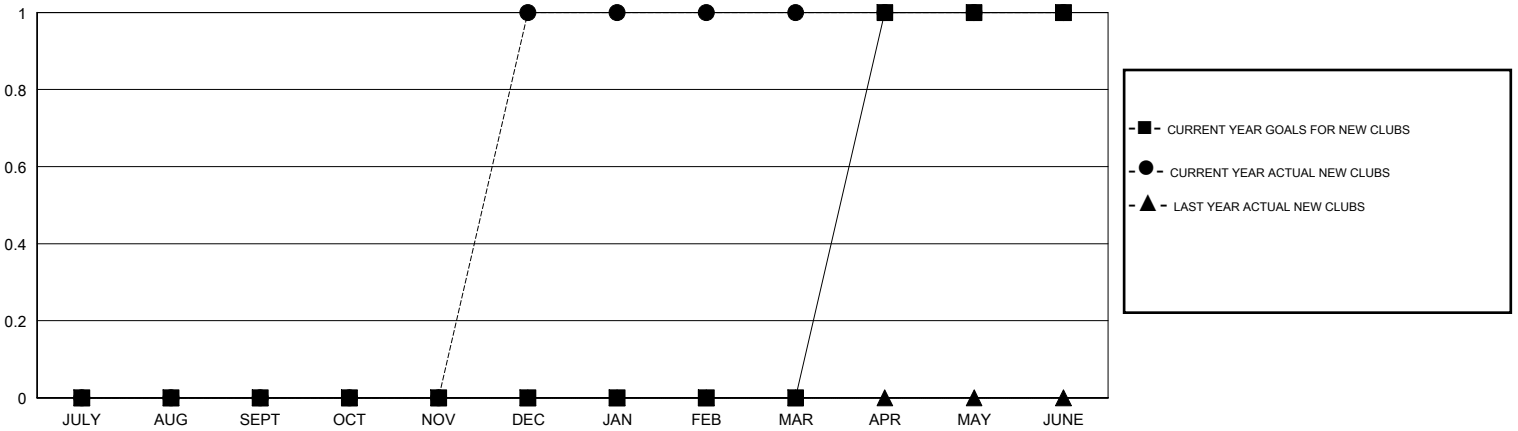
LOCATION TENNESSEE

GMT CA

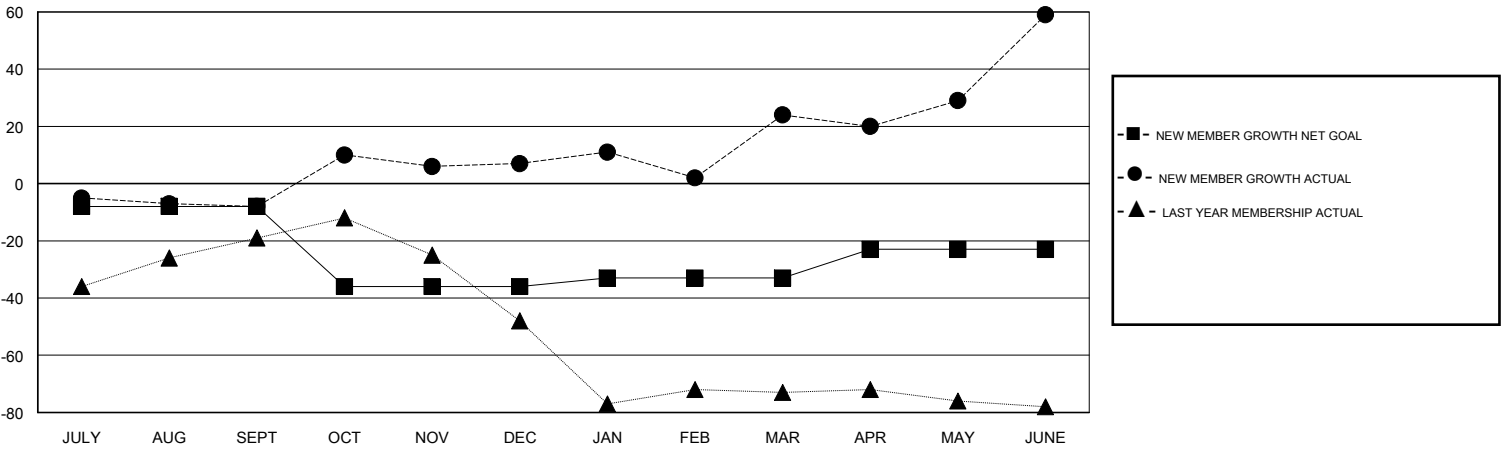
Clubs			
RESULTS FOR 2016-2017			
QUARTER	NEW CLUB GOAL	NEW CLUBS	DROPPED CLUBS
JULY/AUG/SEPT	0	0	0
OCT/NOV/DEC	0	1	0
JAN/FEB/MAR	0	0	0
APR/MAY/JUNE	1	0	0

Members			
RESULTS FOR 2016-2017			
QUARTER	NEW MEMBER GROWTH NET GOAL (not reinstated or transfers)	NEW MEMBER GROWTH ACTUAL (not reinstated or transfers)	DROPPED MEMBERS ACTUAL (including transfers)
JULY/AUG/SEPT	-8	37	45
OCT/NOV/DEC	-28	59	44
JAN/FEB/MAR	3	50	33
APR/MAY/JUNE	10	64	29

GOALS AND ACTUAL NEW CLUBS CUMULATIVE



GOALS AND ACTUAL MEMBERS CUMULATIVE



DROPPED CLUBS: 0	33 CLUBS OF 50 ADDED 1 OR MORE NEW MEMBERS	<u>GENDER DISTRIBUTION</u>	
DROPPED MEMBERS		MALE	745 (58.66%)
DECEASED	20	FEMALE	525 (41.34%)
CLUB CANCELLED	0	TOTAL FAMILY UNIT MEMBERS	266
OTHER	131	FAMILY MEMBERS PAYING HALF DUES	138
TOTAL	151		

[CLICK HERE FOR CUMULATIVE MEMBERSHIP DATA](#)